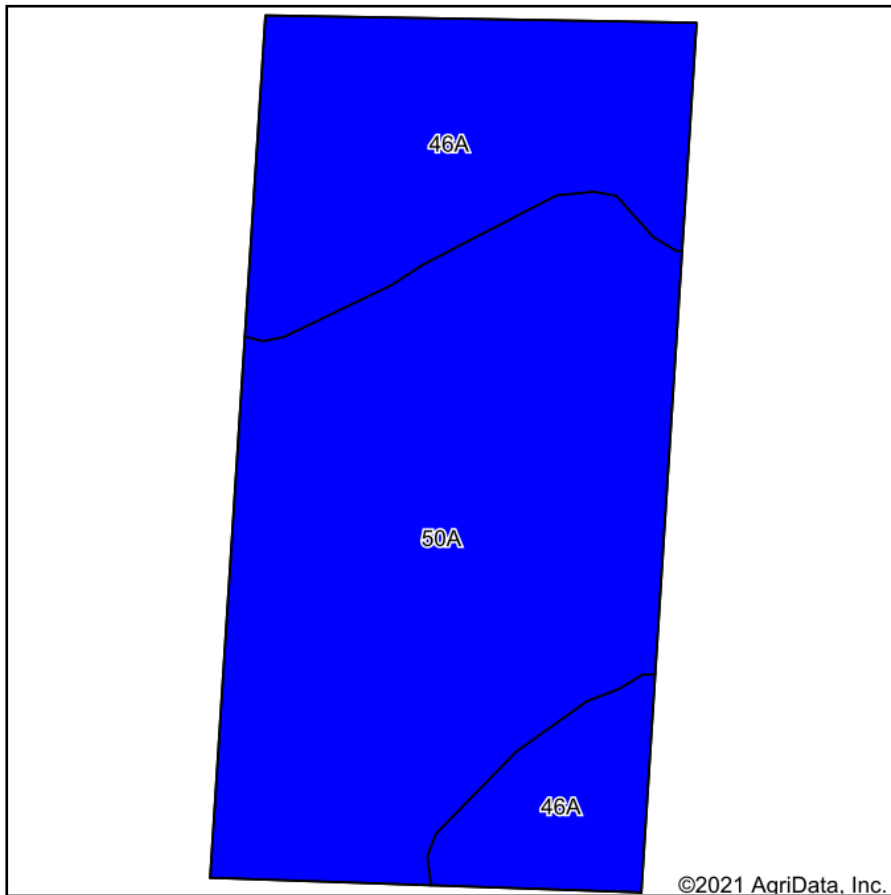
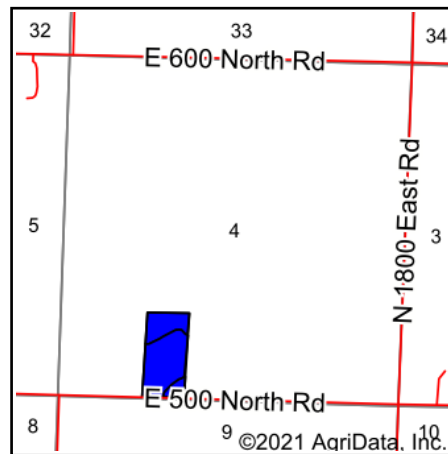


Soils Map



Soils data provided by USDA and NRCS.



State: **Illinois**
 County: **Christian**
 Location: **4-11N-1W**
 Township: **Rosamond**
 Acres: **20.04**
 Date: **1/20/2021**



Code	Soil Description	Acres	Percent of field	Il. State Productivity Index Legend	Subsoil rooting ^a	Corn Bu/A	Soybeans Bu/A	Crop productivity index for optimum management
50A	Virden silty clay loam, 0 to 2 percent slopes	12.82	64.0%		FAV	182	59	135
46A	Herrick silt loam, 0 to 2 percent slopes	7.22	36.0%		FAV	181	58	133
Weighted Average						181.6	58.6	134.3

Table: Optimum Crop Productivity Ratings for Illinois Soil by K.R. Olson and J.M. Lang, Office of Research, ACES, University of Illinois at Champaign-Urbana. Version: 1/2/2012 Amended Table S2 B811

Crop yields and productivity indices for optimum management (B811) are maintained at the following NRES web site: <http://soilproductivity.nres.illinois.edu/>

** Indexes adjusted for slope and erosion according to Bulletin 811 Table S3

^a UNF = unfavorable; FAV = favorable

^c: Using Capabilities Class Dominant Condition Aggregation Method

Soils data provided by USDA and NRCS. Soils data provided by University of Illinois at Champaign-Urbana.